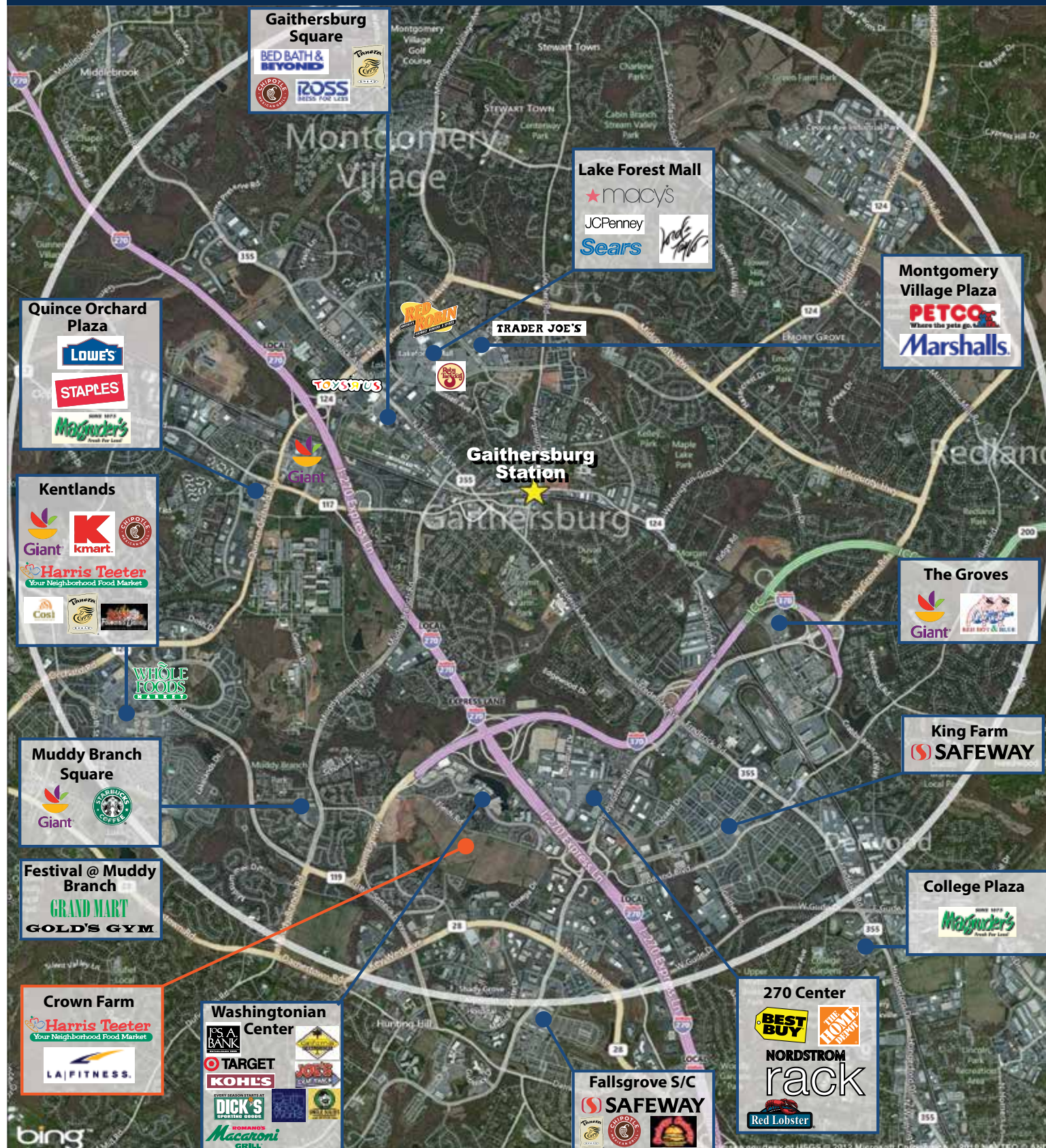


RAPPAPORT

GAITHERSBURG STATION Gaithersburg, Maryland

16,580 SF of Space Available



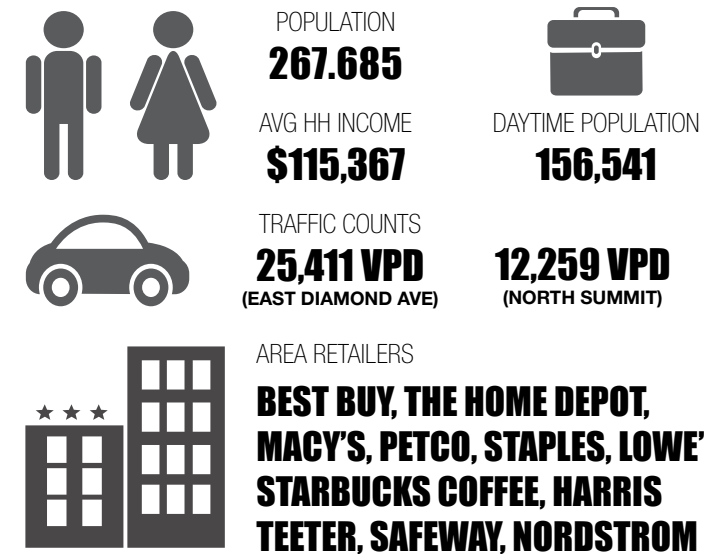
RAPPAPORT

GAITHERSBURG STATION Gaithersburg, Maryland

16,580 SF of Space Available



STATISTICAL SNAPSHOT 5-MILE RADIUS, 2013 DEMOS



GAITHERSBURG STATION FACTS AT-A-GLANCE

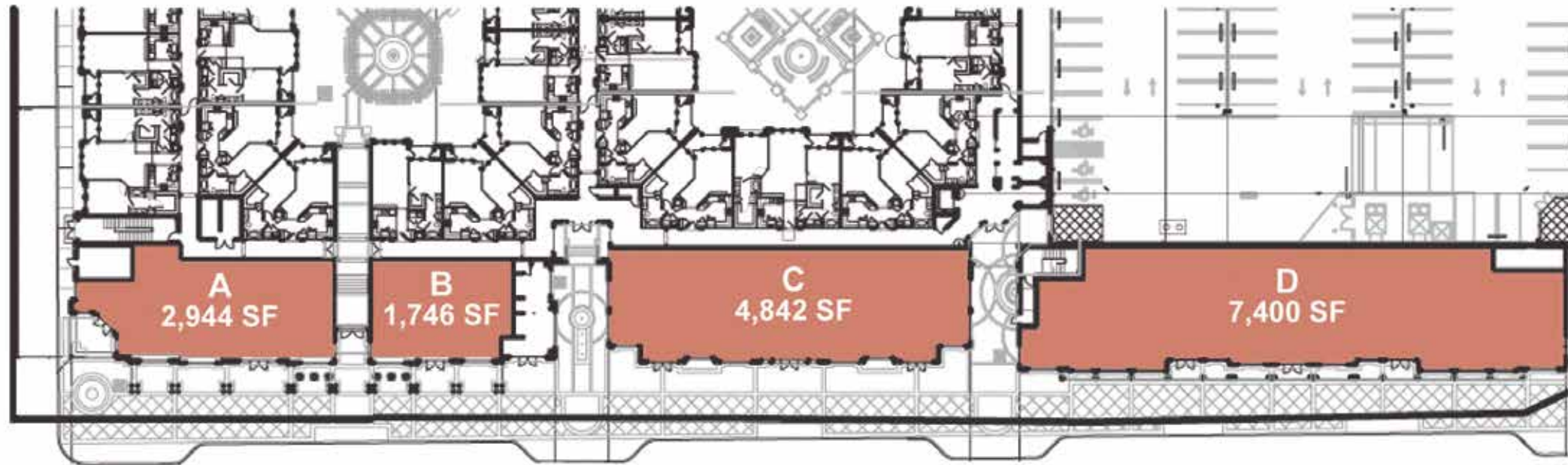
- 16,580 SF of space
- Directly across Diamond Ave. from the MARC station
- Highly visible streetfront retail space on East Diamond Avenue in downtown Gaithersburg
- Property includes 389 luxury residential units
- 77 dedicated retail parking spaces within the mix use complex

DEMOGRAPHICS (2013)	1 MILE	3 MILES	5 MILES
POPULATION	22,962	133,377	267,685
AVG HH INCOME	\$79,763	\$98,609	\$115,367
EMPLOYEES	9,683	90,718	156,541

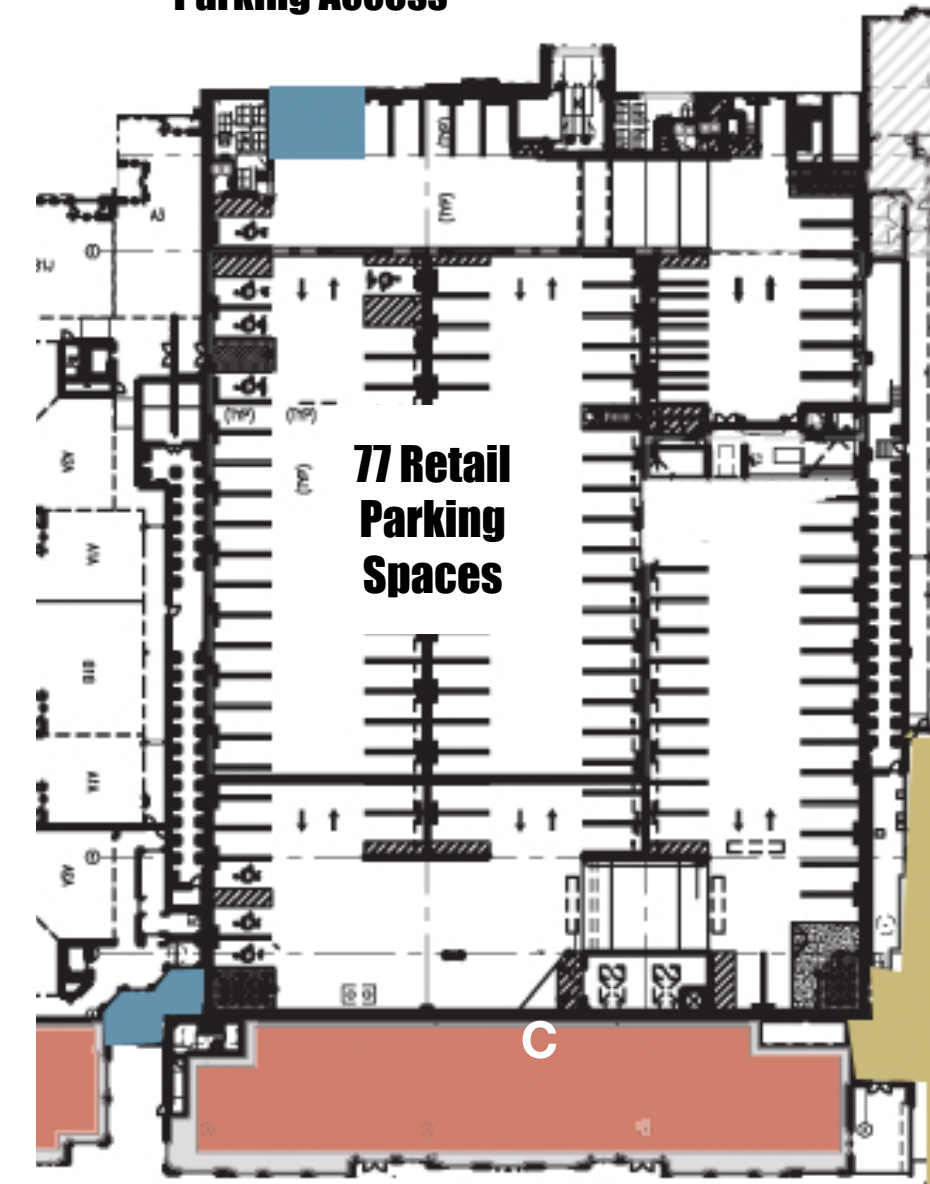
SITE FACTS	
SPACE:	16,580 SF Available
TRAFFIC COUNTS:	E. Diamond Ave - 25,411 VPD N. Summit - 12,259 VPD

CONTACT:
 Bill Dickinson
 bdickinson@rappaportco.com
 (T) 703.310.6983
 Kristin Perry
 kperry@rappaportco.com
 (T) 571.382.1228

Retail Spaces



Parking Access



Retail Parking Access

DIAMOND AVENUE

